



**Japanese-City.com**  
Find an Amazing Japanese Event.

[+ Add a Japanese Event](#) [✓ Hot!](#) [★ Top!](#)

[Home](#) | [Japanese Obon Events](#) | [Cherry Blossom](#) | [Calendar Events](#) | [Email Sign-Up](#) | [Friends](#) | [About](#) | [Press \[F5\]-New Photo](#)



## 2011 Calendar Events

### Lethal Beauty: Samurai Weapons and Armor - Clark Center for Japanese Art & Culture

[Like](#) 1K [Tweet](#) 0 [Share](#) 0 [Print](#) [Email](#)

2009 is the year when the samurai invaded California. Four museums in four different cities organize exhibitions related to the legendary Japanese warriors. Whereas the three spring and summer exhibitions in Santa Ana, Pasadena, and San Francisco present an overview of samurai culture, the fall exhibition at the Clark Center for Japanese Art & Culture in Hanford solely focuses on the beauty of weaponry and armaments.

The samurai are especially famous for their moral code, stressing loyalty, honor, and the mastery of martial arts. Like no other warrior class in world history, they continue to captivate the imagination and fascination of young and old. Since the 12th century, the samurai warrior class served the nobility through periods of intense warfare and during peaceful times like the reign of the Tokugawa family from 1603 until 1868. In 1876, the samurai were officially disbanded and ordered to give up carrying swords.

Higher ranks of these samurai engaged not only in battles but also followed artistic and spiritual pursuits. Based on their sense for aesthetics and beauty, suits of armor became exquisite designs and, literally on top of them, flaunted fierce face masks and dramatic helmets, underlining the owner's superhuman image of power. Swords were decorated with elaborate mountings reflecting the accomplished taste of the owner and the blades, created by highly refined craftsmen, are themselves unsurpassed artistic expressions of a lethal beauty.

Scenes from the Tales of Heike  
Scenes from the Tales of the Heike  
*Detail from a six-panel screen pair*  
Late 17th cent.  
Clark Center Collection

This duality of deadly weapon and artistic beauty is the focus of the fall exhibition **Lethal Beauty: Samurai Weapons and Armor** at the Clark Center for Japanese Art & Culture. On view will be more than 60 objects from different Californian collections, featuring superb suits of armor, outstanding helmets, face masks, sword fittings, and especially weapons like exquisite short and long swords, daggers, and matchlock guns. A part of the exhibition presents examples of how these weapons were recycled after the disbandment of the samurai.

Curated by Andreas Marks, Director & Chief Curator

#### Exhibition Dates

September 1, 2009 - January 30, 2010

#### Gallery Hours

Tuesday through Saturday 12:30 - 5 pm. Closed on national holidays and during the month of August.

Admission (including \$1 surcharge for this exhibition): \$6 for adults, \$4 for students and active military service with valid ID. Children 12 and under free.

Weekly docent tours are held Saturdays at 1 pm and guided group tours can be arranged by calling the Center in advance at (559) 582-4915.

## EXCITING Events

INSPIRING CULTURAL EVENTS



Help Save a Life  
TeamKrissy.com

### MONDAY

<	Feb 2011					>
S	M	T	W	T	F	S
		01	02	03	04	05
06	07	08	09	10	11	12
13	14	15	16	17	18	19
20	21	22	23	24	25	26
27	28					

Ads by Google

[Japanese Festival](#)

[Samurai](#)

[Japanese Culture](#)

[Japanese Food](#)

[Japanese Traditions](#)

## TOP CLICKS

MOST POPULAR PAGES

Find Sports for Your Children

- [Japanese Sports Sign-up List](#)
- [2011 Day of Remembrance](#)

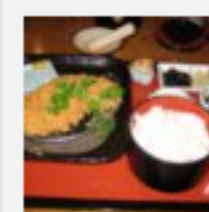
#### Events

- [2011 Cherry Blossom Festivals](#)
- [This Month Events](#)
- [Find Most Recommended](#)
- [Find Most Clicked on Events](#)
- [Find Newest Events \( 27 \)](#)
- [2011 Nisei Week Festival Tips](#)
- [Shofuso Japanese House & Garden](#)



Japanese-City.com

**JapaneseCity**



Valentine's Day Dinner  
- this was so delicious!!  
posted about 9 hours ago