

**Uncorked** After years of buying the cheap stuff, an unschooled consumer decided to plumb the mysteries of choosing fine wine. BY TOM SHRODER | 18

OCTOBER 3, 2010

# WAP

magazine



**Trend Report:**  
Fall's new bounty  
of beauty | 4

**Date Lab:**  
A 'zesty' pair's  
impromptu party | 6

**Dining:** Korean  
meets Cajun? Why  
you should try it | 26

## The Unlikely Congressman

How **Joseph Cao** lost his  
country, decided to be a priest,  
then wound up on Capitol Hill

BY STEVE HENDRIX | PAGE 8





## Museums & Galleries

STEPHANIE MERRY'S PICK

### DON'T MISS

#### "The New Word" and "The Old Lady Shows Her Medals"

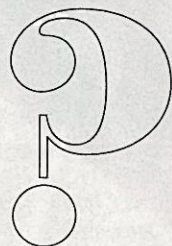
Fresh off its success with "Travels With My Aunt," Rep Stage presents two short plays penned by "Peter Pan" author J.M. Barrie. // Wednesday through Oct. 24. The Horowitz Visual and Performing Arts Center, Howard Community College, 10901 Little Patuxent Pkwy., Columbia. 410-772-4900. [www.repstage.org](http://www.repstage.org). \$16-\$30.

#### Les Ballets Trockadero de Monte Carlo

Making its Kennedy Center debut, the all-male troupe shows off the fun side of dance with a parody on classical ballet and modern dance. // 8 p.m. Wednesday and Thursday. Kennedy Center, Eisenhower Theater, 2700 F St. NW. 202-467-4600. [www.kennedy-center.org](http://www.kennedy-center.org). \$22-\$65. — Stephanie Merry

IMAGE FROM "OCTOBER" COURTESY OF THE AMERICAN FILM INSTITUTE; PHOTOGRAPH OF SUDHA RADHAKRISHNAN, OF THE DAKSHINA/DANIEL PHOENIX SINGH DANCE COMPANY, BY ISAAC OBOKA; PHOTOGRAPH OF "STREET VENDORS, HAITI," COURTESY OF THE LOIS MAILOU JONES PIERRE-NOËL TRUST

### Got Plans

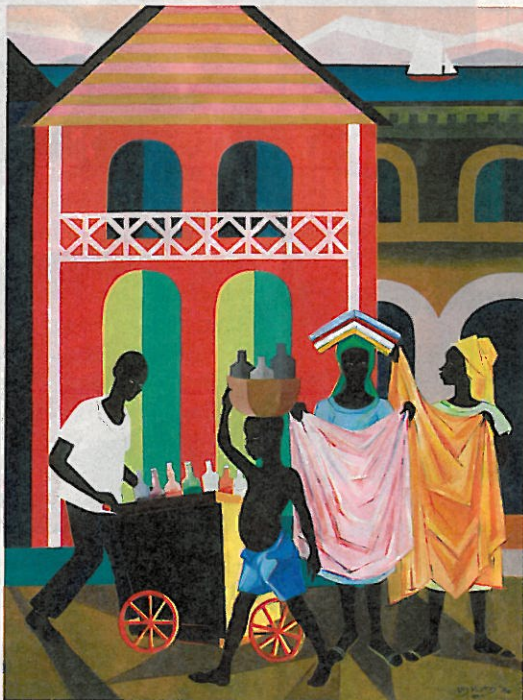


#### FALL COLORS?

How early is too early for fall color hiking? How late is too late? LAVANYA RAMANATHAN: There is a short window to do this at peak period. I was just told by folks at the **National Arboretum** that in this area, right around Halloween will be when you see peak colors. If you want to head to **Skyline Drive** or **Luray Caverns**, you have to check out their awesome webcam so you can monitor the leaves from afar. [www.nps.gov/shen/photos/multimedia/view\\_webcam.htm](http://www.nps.gov/shen/photos/multimedia/view_webcam.htm)

## Tribute to an art pioneer

The National Museum of Women in the Arts is paying tribute to a local artist with the survey "Lois Mailou Jones: A Life in Vibrant Color." The Howard University professor, who broke barriers of her race and her gender, had a career that spanned seven decades and encompassed all manner of styles and subjects. The exhibition includes 70 of her works, including paintings and textiles, which show off her myriad inspirations from the French countryside to African art. // Saturday through Jan. 9. National Museum of Women in the Arts, 1250 New York Ave. NW. 202-783-5000. [www.nmwa.org](http://www.nmwa.org). \$10, \$8 students and seniors, free 18 and younger.



#### DON'T MISS "Wild Music: Sounds & Songs of Life"

The National Geographic Museum has unveiled a show that should please both nature lovers and music fans. The interactive exhibit looks at sounds unique to various animals from bird songs to whale calls. // Through Jan. 2. National Geographic Museum, 1145 17th St. NW. 202-857-7588. [www.nationalgeographic.com](http://www.nationalgeographic.com). Free.

#### "TruthBeauty: Pictorialism as Art, 1845-1945"

For the pictorialists, the camera was not merely an apparatus of record but also a vehicle for fresh artistic expression. The images on display by the likes of Alfred Stieglitz and Elias Goldenksy illustrate a period of technical advancement that led to artistic innovation. // Saturday through Jan. 9. The Phillips Collection, 1600 21st St. NW. 202-387-2151. [www.phillipscollection.org](http://www.phillipscollection.org). \$12; \$10 students and seniors. — Stephanie Merry

